

On the occasion of
Eid-E-Miladunnabi

fana fillah

Dissolving into the Supreme Light

A Solo Art Exhibition by Ayreen Khan



Curated by Ronni Ahmed

07 Nov-09 Dec, 2019 **BEGUM** Restaurant & Gallery Dorjibari, Purbachol, Dhaka

Curatorial Note

Ronni Ahmmed

A Sufi art exhibition by **Ayreen Khan** is taking place at **Begum Gallery** to celebrate the occasion of **Eid e Miladunnabi**, the birth of **Prophet Muhammad (Swt)**.

Ayreen is a multi-talented artist based in Bangladesh. Her body of work ranges from social activism to music, writing, and presentation in the digital and electronic media.

Her practice of **Sufism** led her to explore the beauty of supreme Nur and His creation. Her works are colorful, sometimes psychedelic in essence. She put enormous effort to create each art work using extremely detailed geometric patterns, influenced by Islamic art forms of mosques and other symbolic wisdom of Sufi path.

She is a focused artist and exploring her journey with great patience. She started creating art about a year ago yet she achieved an expanded vision and developed wonderful skills. Her choices of colors create a dreamy and aquatic impression. Throughout her work is a rare blend of strong feminine energy reflected in her faith based art journey.

Fana Fillah, a 25x5 feet painting, is a tribute to Sufi faith. The painting narrates the deeper secrets of creation from atom to energy, evolution of civilizations and its process. Allah Swt created matter, energy, time, space, space-time, avatars, prophets, and great ancestors which are expressed through science, religion and mythology. In the end it is a visionary painting of sacred Sufi path, a story of birth and death, separation and unification and a desire to dissolve into the light.

Among her other works, **Dhikr**, a painting of whirling dervishes, portrays true love of a seeker with the whirling universe. Other paintings depict geometric patterns with symbolic meanings and spiritual codes.

Her art vision is full of love and wisdom. Her thought process is profound. Spirituality is her power in art and Sufi path is her heart quest. I wish her grand success in art world.



Fana Fillah: Dissolving into the light October, 2019
(Selected Portion)

25"x5"

I was a hidden Treasure I desired to be recognized so I created the creature"
-Hadith Qudsi

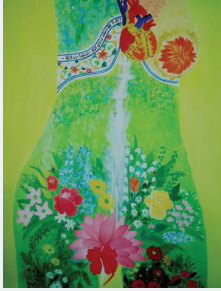
About The Exhibition

Ayreen Khan

Sufi path is a path of purification that investigates the truth about self. The quest is not out of idle intellectual curiosity rather with a definite purpose. By observing ourselves we become aware for the first time of the conditioned reactions, the prejudices that cloud our mental vision, that hide reality from us and produce suffering. We recognize the accumulated inner tensions that keep us agitated, miserable and we realize they can be removed. Gradually we learn how to allow them to dissolve and our minds become pure, peaceful and happy.

There is no "I", no permanent self or ego. The ego is an illusion created by the combination of mental and physical processes. Having explored the body and mind to the deepest level, one sees that there is no immutable core, no essence that remains independent of the process, nothing that is exempt from the law of impermanence. There is only an impersonal phenomenon, changing beyond one's control.

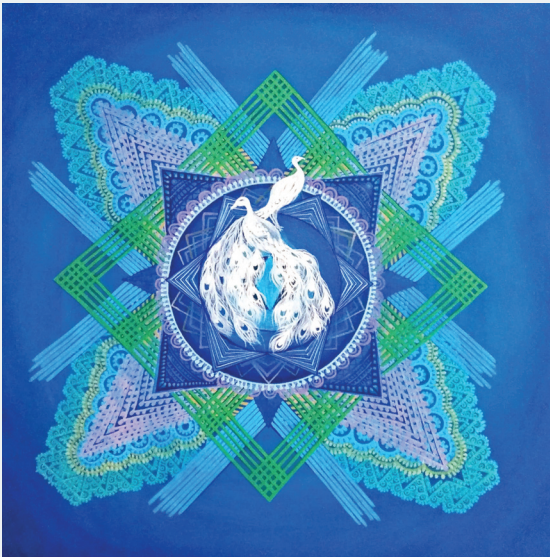
This exhibition is an expression of my deeper desire to find my root a journey to unravel the truth of the universe, from where have I come and to where would I go.



Garden of Eden March 2018
24"x18"



Fana: Annihilation May 2019
24"x18"

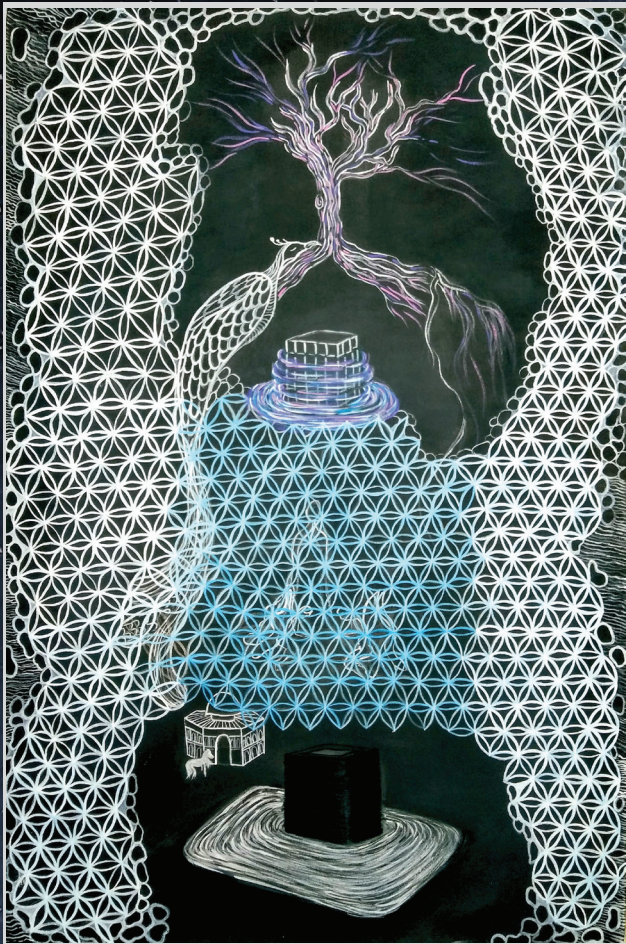


Noor-E-Muhammad July 2018

24"x25"

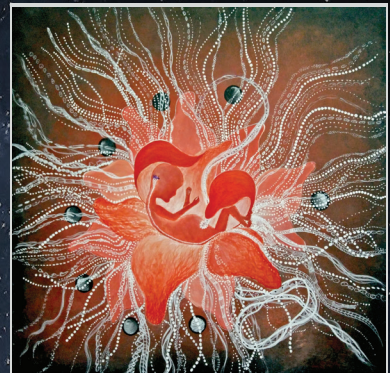
*The agony of lovers
Burns with the fire of passion
Lovers leave traces of where they've been
The wailing of the broken hearts
Is the doorway to God.*

-Rumi



Miraj: demystify the glory of the night. May 2019

24"x36"



Qin July, 2019

24"x24"

Partner



KRAYONMAG

Typography and Design Shehab Rahmania
Front Cover Artwork: Dhikr: A lover's quest 24"x18"